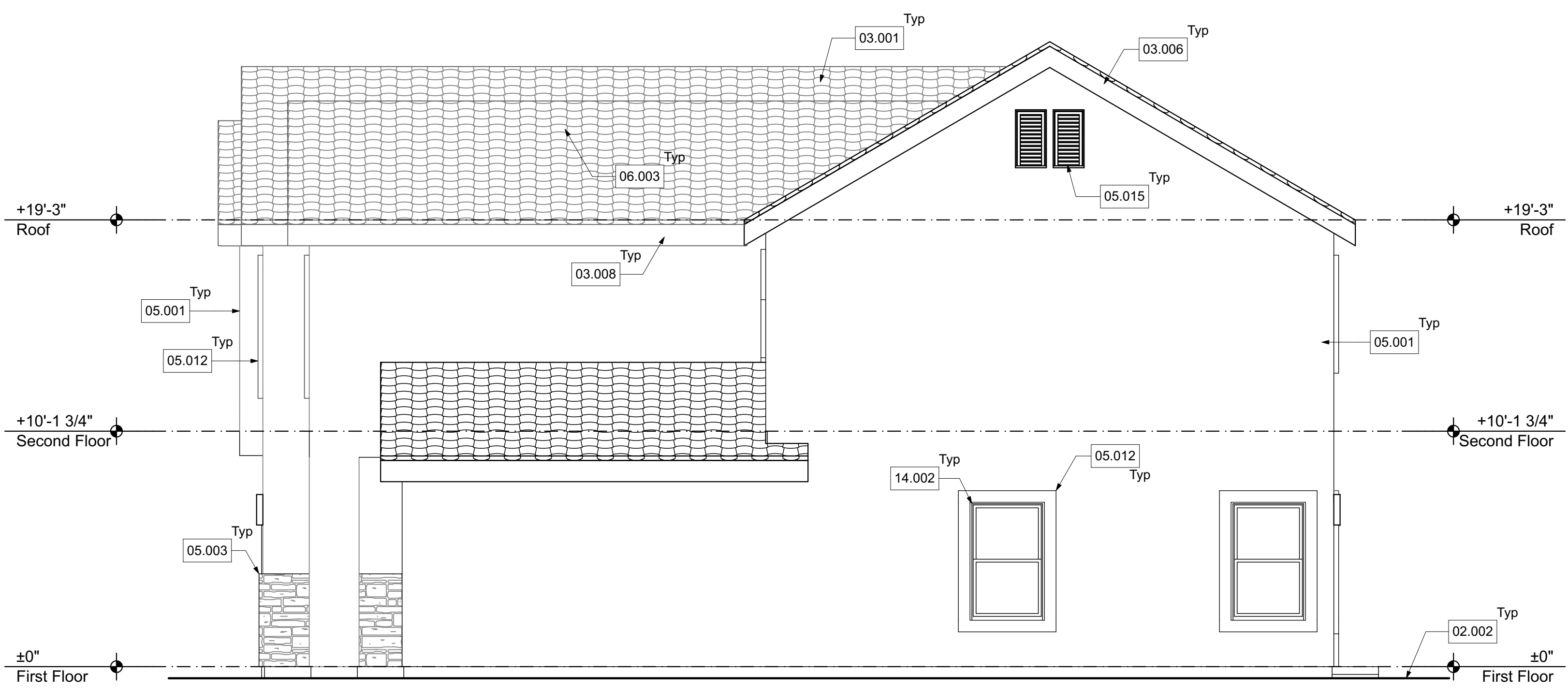
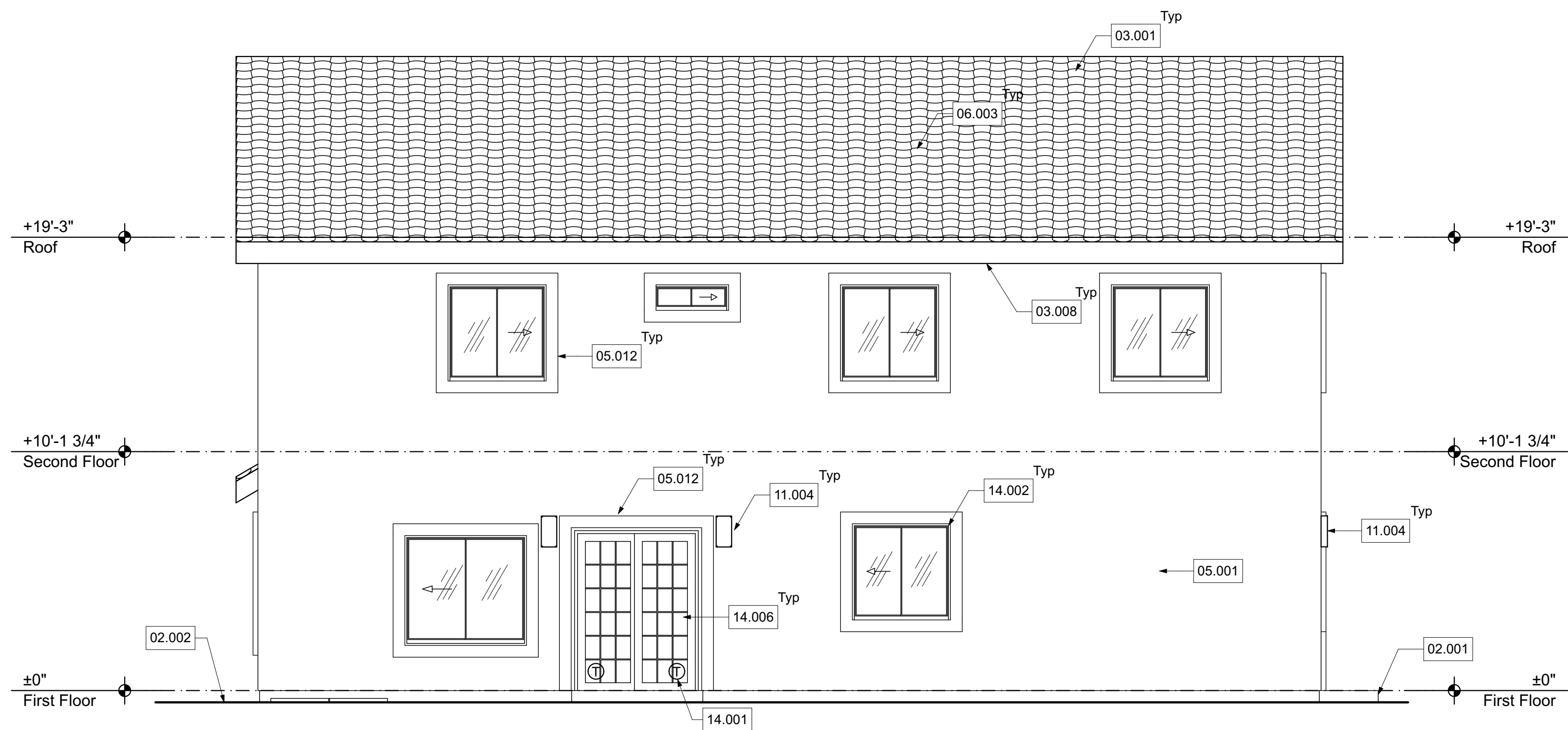


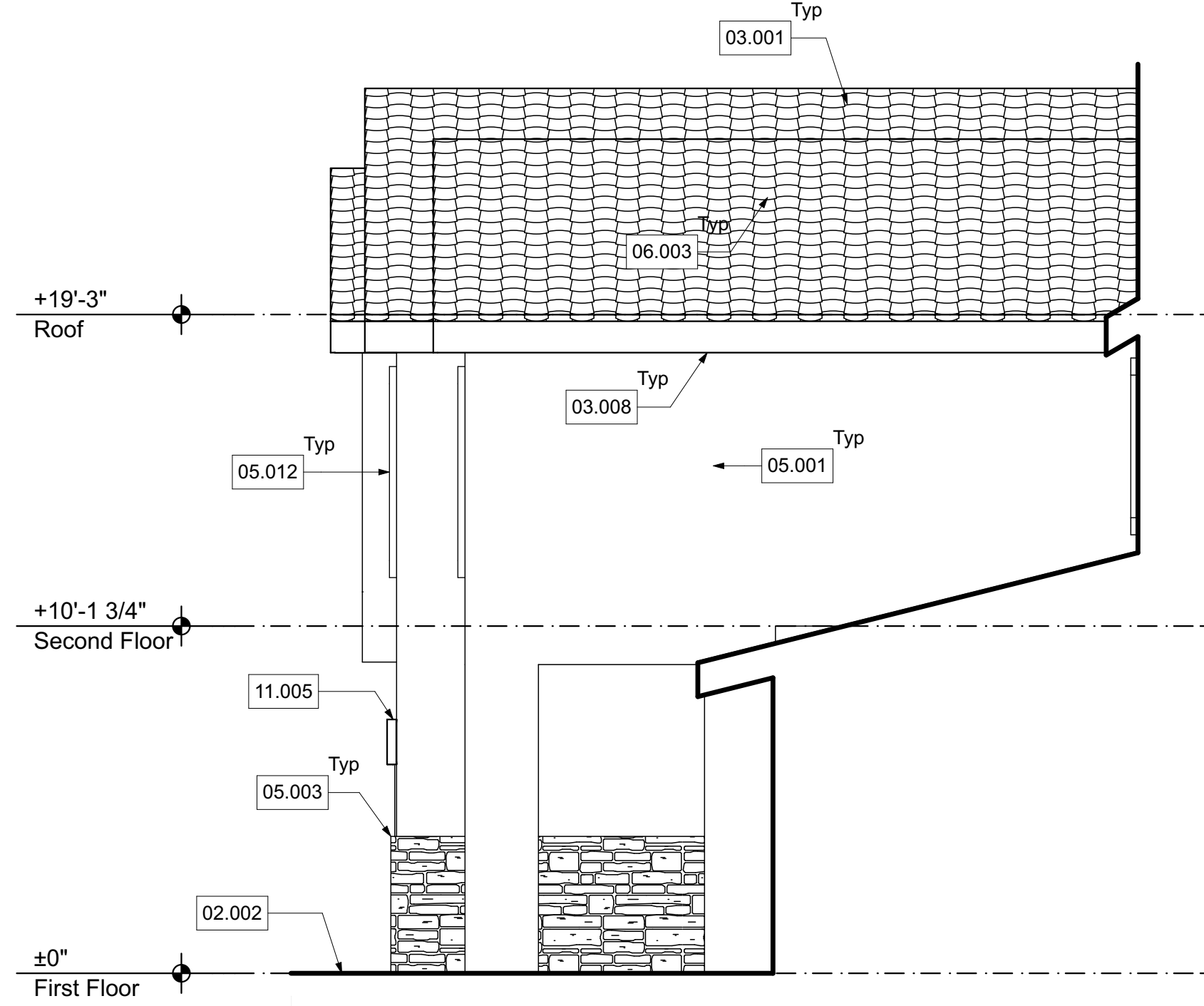
10 North Elevation
Scale: 1/4" = 1'-0"



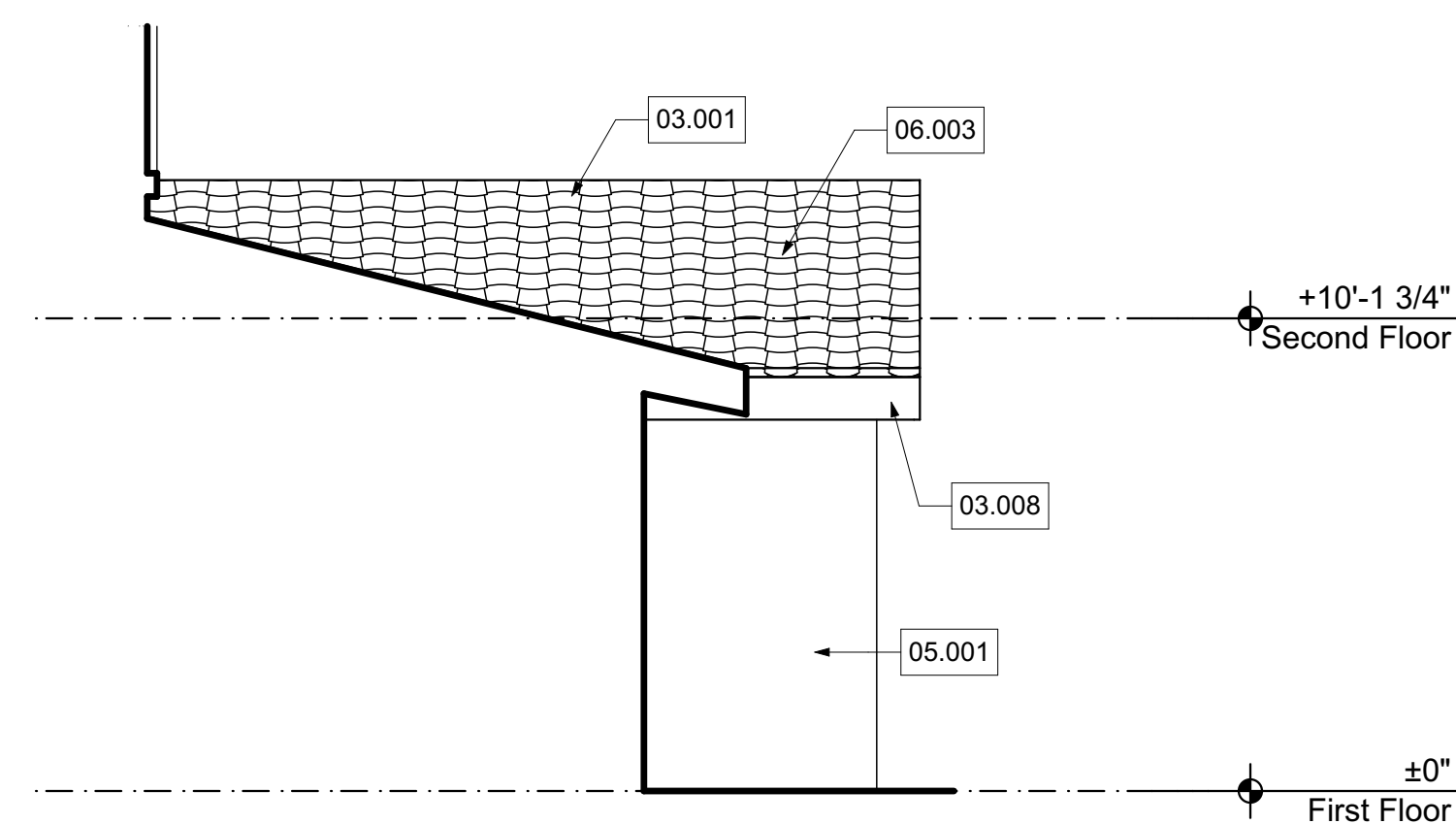
11 West Elevation
Scale: 1/4" = 1'-0"



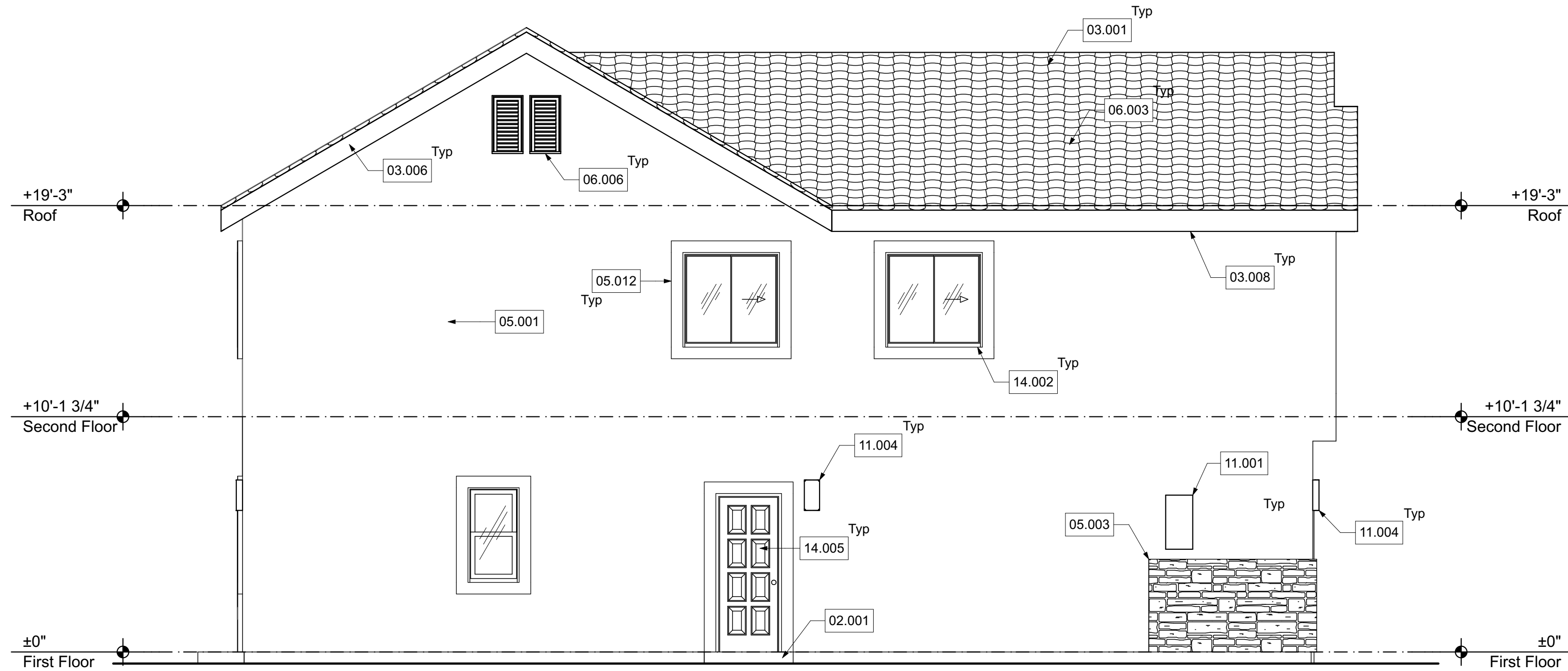
12 South Elevation
Scale: 1/4" = 1'-0"



6 Porch East Elevation
Scale: 1/4" = 1'-0"



6 Porch West Elevation
Scale: 1/4" = 1'-0"



4 East Elevation
Scale: 1/4" = 1'-0"

Elevation Keynotes

02 Site Work

- 02.001 3 1/2" thick concrete slab on grade with medium broom finish. Slope 1/8" per foot away from building. Provide a landing at all doors a minimum of 3" beyond each side of door and a minimum of 36" out from face of door.
- 02.002 Finish grade

03 Roof

- 03.001 Lightweight concrete roof tile. Install per manufacturers specifications for high wind conditions. Install (1) layer #30 asphalt saturated felt below roof tile. See Finish Plan for Model/Color.
- 03.006 2x8 Resawn barge board. See detail 2/S4.02
- 03.008 2x8 Resawn fascia. See detail 1/S4.02

05 Exterior Finish

- 05.001 7/8" Exterior cement plaster with woven wire welded fabric lath over building paper. Provide (2) layers of Grade "D" paper over all plywood shear panel. Use high rib lath at horizontal applications. See Finish Plan for Color.
- 05.003 Cultured Stone by Boral. Model: Country LedgeStone. Color: Carmel (CS-CL-Carmel). ICBO Report No. NER 358. Install per manufacturer's specifications.
- 05.012 Decorative trim with stucco coat without stone exterior condition per details 7/A7.01 & 8/A7.01
- 05.015 Fypon (or approved equivalent) 2"x16"x36" Decorative Cathedral Gable Louver Vent. Model: CLV16x36. Install per manufacturer's specifications. See Finish Plan for color.
- 05.016 Fypon (or approved equivalent) 2"x18"x24" Decorative Vertical Louver Gable Grill Vent. Model: LV18x24. Install per manufacturer's specifications. See Finish Plan for color.

06 Moisture/Thermal/Ventilation

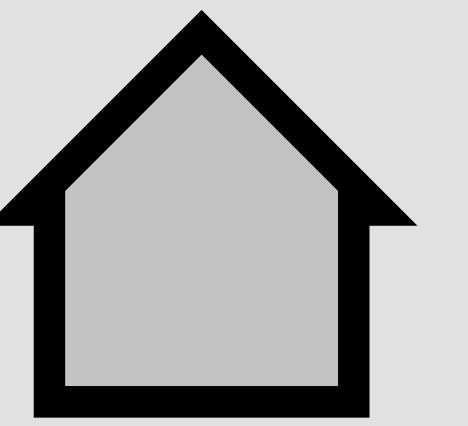
- 06.003 22"x3" rafter vents (Harlen RV322 or approved equal) galvanized steel backed with 1/4" mesh galvanized hardware cloth.
- 06.006 Fypon (or approved equivalent) 2"x16"x36" functional Cathedral Gable Louver Vent. Model: FCLV16x36. Install per manufacturer's specifications. See Finish Plan for color. (NVFA= 21.0 Sq.In)

11 Electrical

- 11.001 100 Amp recessed main panel with underground feed. Verify exact location with utility company.
- 11.004 Wall mounted exterior light. See Electrical Plans
- 11.005 Ceiling mounted exterior light. See Electrical Plans
- 11.006 Provide gas and water bonding to service
- 11.007 Illuminated address sign. +68" AFF, UNO. The numbers shall be no more than 4 inches in height and shall be of a contrasting color to the background to which they are attached

14 Doors & Windows

- 14.001 "T" indicates "tempered glass"
- 14.002 Dual glaze window per Window Schedule
- 14.003 16'x7' 2-Car Sectional Garage Door. See Door Schedule
- 14.004 Entrance Door per Door Schedule
- 14.005 Insulated Exterior Metal Door per Door Schedule
- 14.006 Insulated Exterior Metal French Door per Door Schedule



No.	Date	Revision Description

Client:
Trinity Homes
9377 Haven Avenue
Rancho Cucamonga, CA 91730

New Single Family Residence for Trinity Homes
 16475 Pine Wood Street (APN: 0240-411-59)
 16487 Pine Wood Street (APN: 0240-411-60)
 Fontana, CA 92336



Elevations

Status: Construction Documents
 Project: AL13-106
 Drawn By: ASL
 Date: May 10, 2017